

ELEMENTS *of nature*

NATURAL Stained Concrete

Item Number: PT-251-9

Specifications:

- Dimensions: 9" x 18"
- Thickness: 2.0mm
- Wear Layer: 0.12mm

Packaging:

- 36 square feet per carton
- 72 cartons per pallet

Slip resistance: Conforms to ASTM C-1028

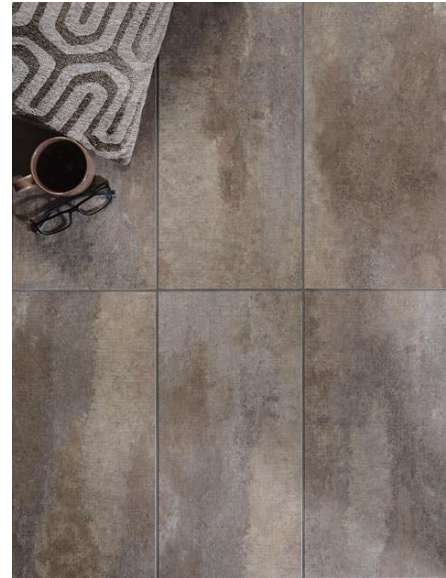
Resistance to Wear: Conforms to ASTM 3884

Dimensional Stability: Conforms to SS-T-321B and ASTM F-1303

Chemical Reaction: Conforms to ASTM F-925

Suitability: General Duty Residential, suitable for any room in the home

Fire Resistance: Conforms to NFPA 258, ASTM E-662 & ASTM E-648



by  SCS certified.